



Our Lady of Compassion Catholic School

Kineton Green Road

Solihull

B92 7EG

Tel: 0121 706 9508

Email: office@olc.solihull.sch.uk

Website: <http://www.olc.solihull.sch.uk/>



To Live As Jesus Taught Us.

School Newsletter – 1

Date: Friday 5th September 2025

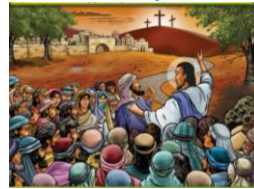
Dear Parents, Carers and Children,
As we step into a brand-new academic year, I want to extend a heartfelt welcome back to each and every one of you. I hope the summer break provided time for rest, reflection, and joyful moments with loved ones. A new school year always brings with it a sense of renewal - a fresh start filled with possibilities. Whether you are returning with familiar faces or joining us for the first time, I want you to know that you are part of a community that values kindness, curiosity, and growth. We will continue to create a learning environment where every child feels safe, supported, and inspired to achieve their very best. Our dedicated staff are ready to guide, challenge, and encourage, and I am confident that together we will make this year one of meaningful learning and memorable experiences. Let us embrace the opportunities ahead with optimism and determination. I look forward to seeing the wonderful things we will accomplish together.

Warmest wishes,
Mr N Emery
(Headteacher)

Term Dates

Our term dates for this academic year (2025-2026) and next year (2026-2027) are accessible by following this link: <https://www.olc.solihull.sch.uk/page/?title=Key+Information&pid=36>. We ask that you familiarise yourselves with these dates to maximise your child's attendance.

Wednesday Word



This Sunday's Gospel reminds us that, to be Jesus' friends, we must put our loyalty to him before anything else in our life. We can all ask God to help us to grow in loyalty – it's a gift worth asking for. **“Jesus is the loyal friend who never abandons us.” Pope Francis**

To be loyal is to be faithful, reliable, supportive and trustworthy – to keep promises and stand up for the truth. Being loyal to Jesus is not always easy. He asks us to take up our cross. This means that we must sometimes do difficult things like saying sorry or helping when we don't want to. Perhaps we can: always try to love our neighbour as ourselves; spend time with Jesus and listen to him through daily prayer; be self-giving – always trying to put others' needs before our own; try to forgive others in the same way that Jesus forgives us.

Harvest Gifts

On Monday 15th September, we will start the collection for the Harvest Mass at the Friary that will take place on Sunday 28th September. Therefore, if you wish to support and donate any dried or packets of food, please send these into school with your child(ren) by Friday 26th September so that we can transport the donations to the Friary. We thank you in advance for your generosity and support.

Sacramental Dates

Following on from the last newsletter before the Summer Holiday break, please see a reminder of the Sacramental Dates for 25/26, as follows:

- Year 6 Confirmation – Friday 6th February 2026 at 7pm
- Year 3 First Holy Communion – Saturday 9th and 16th May 2026 at 10am

SUMMARY

- Wednesday Word
- FOLC Fun Day
- Term Dates
- Harvest Gifts
- Sacramental Dates
- Olton Friary Link
- Dates for 25/26
- Nursery Admissions 2025/26
- Online Safety
- Weekly Learning Plans
- Swimming
- School Fund
- PE Kit Days
- Guitar
- Sports Clubs
- Earrings
- Nut Aware School
- Attendance
- Newsletter/School App

Olton Friary Link



To hear all about the wonderful events that take place at the Olton Friary, please follow this link below that will lead you to their notice page on their website:

<https://www.oltonfriary.org.uk/weekly-notices/>

Dates for 2025/26

Further dates will be added throughout the term

8.9.25 – After School Clubs begin
10.9.25 – Guitar lessons begin for Class 4B (Mr Brennan's Class)
12.9.25 – FOLC Family Fun Day – 3pm
14.9.25 – Education Sunday
15.9.25 – Donations of Harvest Gifts
16.9.25 – Swimming begins for Class 6D (Miss Dowling's Class)
16.9.25 – FS Working Together Meeting – 4pm
16.9.25 – KS1 Working Together Meeting – 5.15pm
17.9.25 – UKS2 Working Together Meeting – 4pm
17.9.25 – LKS2 Working Together Meeting – 5.15pm
18.9.25 – St. Peter's Open Day – 5.30pm
21.9.25 – International Day of Peace
22.9.25 – Fairtrade Fortnight begins
24.9.24 – National Fitness Day
26.9.25 – Day of Thanksgiving for Harvest
29.9.25 – Little Way Week
1.10.25 – School Photographs
1.10.25 – Black History Month begins
1.10.25 – Month of the Holy Rosary begins
1.10.25 – Feast Day of St. Therese
2.10.25 – Feast Day of Guardian Angels
3.10.25 – Cafod Family Fast Day
3.10.25 – Season of Creation ends
3.10.25 – Year 6 Prefect Service at Friary – 2pm
7.10.25 – Feast Day of Our Lady of the Rosary
9.10.25 – Feast Day of St John Henry Newman
10.10.25 – World Mental Health Day – children to wear splash of yellow with school uniform
10.10.25 – FS2/Y6 Buddies Service – 2.15pm
11.10.25 – Olton Friary Pilgrim of Hope Flower Festival
12.10.25 – Feast Day of St Wilfrid
13.10.25 – Feast Day of St Edward
16.10.25 – World Food Day
17.10.25 – Year 6 Trip to St. Chad's
17.10.25 – FOLC Disco at OLC
20.10.25 – Diwali
23.10.25 – Last day of half-term for pupils
24.10.25 – School Closed to pupils for INSET Day
31.10.25 – Closing date for Secondary Applications
1.11.25 – All Saints' Day – Holy Day of Obligation
3.11.25 – School reopens for Autumn Term 2
4.11.25 – FS1/FS2 Open Day – 5pm

Dates for 2025/26 Continued

10.11.25 – World Science Day
10.11.25 – Anti-bullying Week
11.11.25 – Remembrance Day
12.11.25 – Parents' Evening
13.11.25 – Parents' Evening
14.11.25 – Children in Need
17.11.25 – Road Safety Week
17.11.25 – Flu Immunisations (FS2 to Y6)
19.11.25 – Drop Everything and Read Day
20.11.25 – World Children's Day
20.11.25 – OLAAS MAC celebration Day
20.11.25 – One Life Retreat Day – Y6
21.11.25 – End of Jubilee Year
23.11.25 – Christ the King – Youth Mass
30.11.25 – St. Andrew's Day
30.11.25 – Advent begins
3.12.25 – FS2 Nativity – 9.20am
6.12.25 – Christmas Fayre at OLC
9.12.25 – Last Swimming Session for Class 6D
10.12.25 – FS1 Nativity – 9.20am
11.12.25 – Y4/Y5/Y6 Reconciliation
12.12.25 – Christmas Jumper Day
12.12.25 – FS1 Application Deadline for 26/27
12.12.25 – KS1 Carols – 9.30am
12.12.25 – LKS2 Carols – 10.30am
12.12.25 – UKS2 Carols – 2.30pm
16.12.25 – Stay and Pray Whole School – 2.30pm
17.12.25 – Christmas Dinner Day
18.12.25 – Party Day
18.12.25 – Whole School Theatre performance at School for children
19.12.25 – Toy Day
19.12.25 – Last Day of Term before Christmas Holidays – School finishes at 2pm

Nursery Admission 2025/26



If you are interested in places for 2025/26 for your child to begin with us in Nursery, please contact the school office.

Online Safety #Wake Up Wednesday

For further information, please visit the National Online Safety website.



Weekly Learning Plans

Across this school year, we will continue to upload our Weekly Learning Plans to our school website. These plans will give you an opportunity to support your child's learning at home – this will start in the wb 15th September. **We are also looking forward to hosting our Phase 'Working Together Meetings' in school** where we will share the expectations for each of our phases across this school year. We hope that you will find these meetings informative and useful.

Swimming



Swimming lessons will begin for children in Class 6D on Tuesday 16th September; after Christmas, 5/6F will start their sessions and 5R will have their turn after Easter.

School Fund

We currently ask you all to pay School Fund in support of our school; we ask for £10 or £15 per family each term. Therefore, you can choose whether to contribute on a termly basis or pay for the full year. To pay for the full year on ParentPay would be £30 per child or £45 per family. We thank you in advance for these contributions which continue to help our school purchase and provide your children with resources that the school budget unfortunately cannot stretch to.

PE Kit Days



Please see below a list of the days when your child is required to wear their PE kit to school:

FS1: Monday / Friday

FS2: Wednesday / Thursday

Year 1: Wednesday / Thursday

Year 1/2: Wednesday / Thursday

Year 2: Wednesday / Thursday

Year 3: Monday / Tuesday

Year 3/4: Thursday / Friday

Year 4: Tuesday / Friday

Year 5: Tuesday / Wednesday

Year 5/6: Tuesday / Wednesday

Year 6: Tuesday / Wednesday

Sports Clubs



We are looking forward to our After School Clubs starting next week. If you would like to book your child onto any of these clubs, please follow this link to our website: <https://www.olc.solihull.sch.uk/school-clubs/>

Guitar



We are pleased to announce that children in Lower Key Stage 2 (Years 3 and 4) will be starting Guitar lessons on Tuesday. Class 4B will begin their lessons this term, followed by 3/4S after Christmas and 3KC after Easter.

Earrings

Following Governor approval, our school uniform policy was amended, starting this September (2025), where children are now no longer able to wear earrings to school. We ask that **all earrings are removed before a child arrives at school** - where parents are contemplating getting their child's ears pierced, we ask that these are done in the school summer holidays to give enough time for the earrings to be removed prior to a new school year. We thank you for your support with this matter so that we can ensure the safety of all children when they attend school.

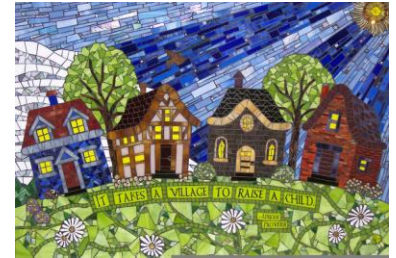


Thank you



Jo, our school traffic warden, would like to say a huge thank you to all parents for your amazing generosity at the end of last term. She was truly touched by your kindness.

OLC 'It Takes a Village' Fund



We are excited to launch our new **OLC 'It Takes a Village' Fund** which aims to bring everyone in our community together to support families who are currently in a difficult financial situation and ensure that we can give their children the best possible educational and extra-curricular experiences. Through the collective effort of the entire community, we can help to ensure that OLC continues to be the special community that it truly is - a school which offers a fantastic education and opportunities to all. We invite families to consider giving to the Fund as much or as little as they can, as and when they can - all donations will be used solely to support the families here at OLC. **OLC 'It Takes a Village' Fund** will be set up on ParentPay from Monday 8th September and will remain open across the school year.

Nut Aware School

As a Nut Aware School, we ask you all to ensure that you are checking your children's lunch boxes so that **no nut products** are sent into school. Thank you.

Attendance

As you would have heard in the news, there is a continued push from the Department of Education to improve attendance across schools. This information was shared with you all prior to the summer holidays and we ask that holidays are not taken in school time. OLC's attendance is in line with the national data, however our attendance would be significantly above national average without the holiday absences that are taken in the school term.